



WELL : West Mereenie 24 - ST01

FIELD : Mereenie

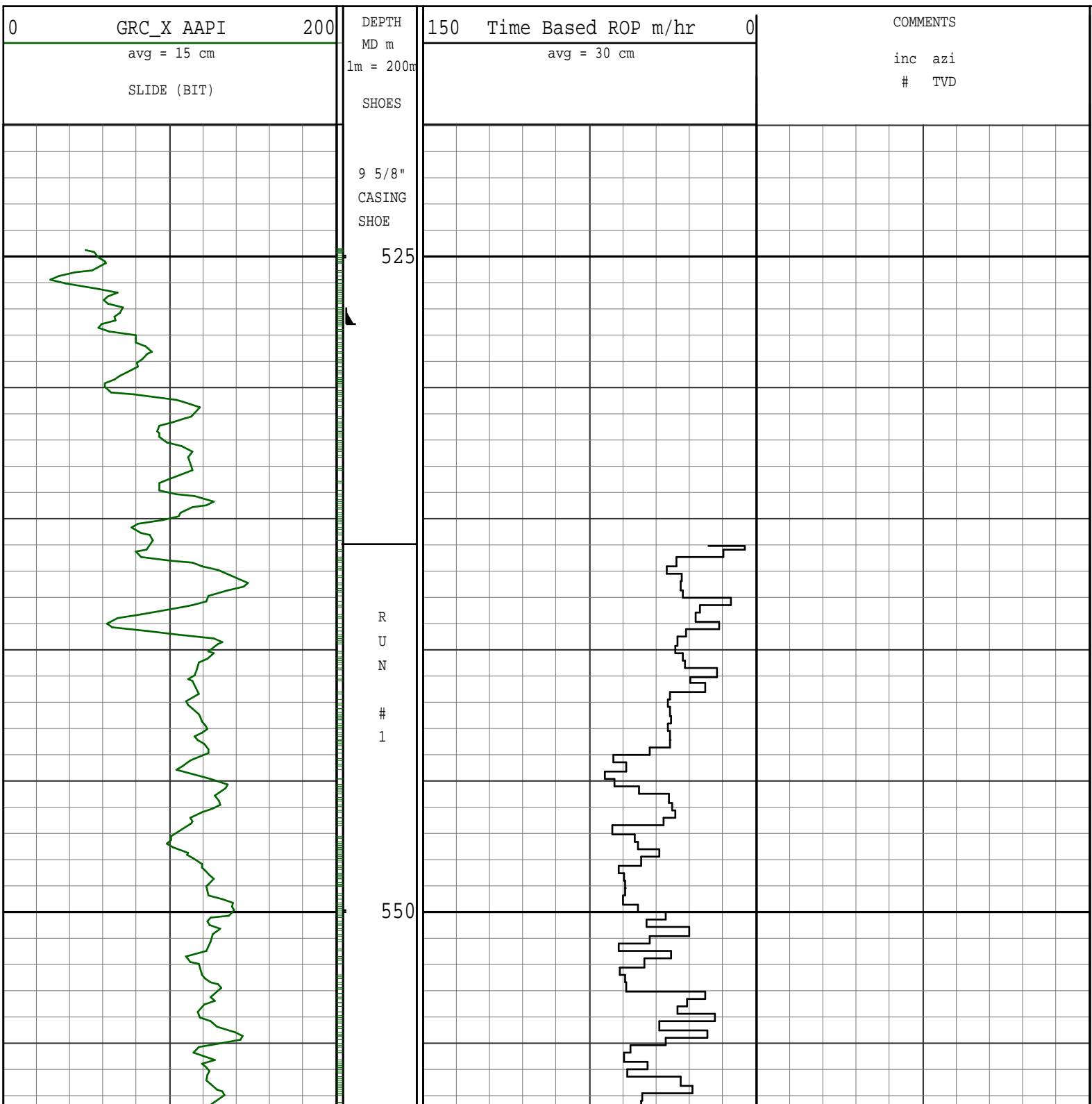
REMARKS:

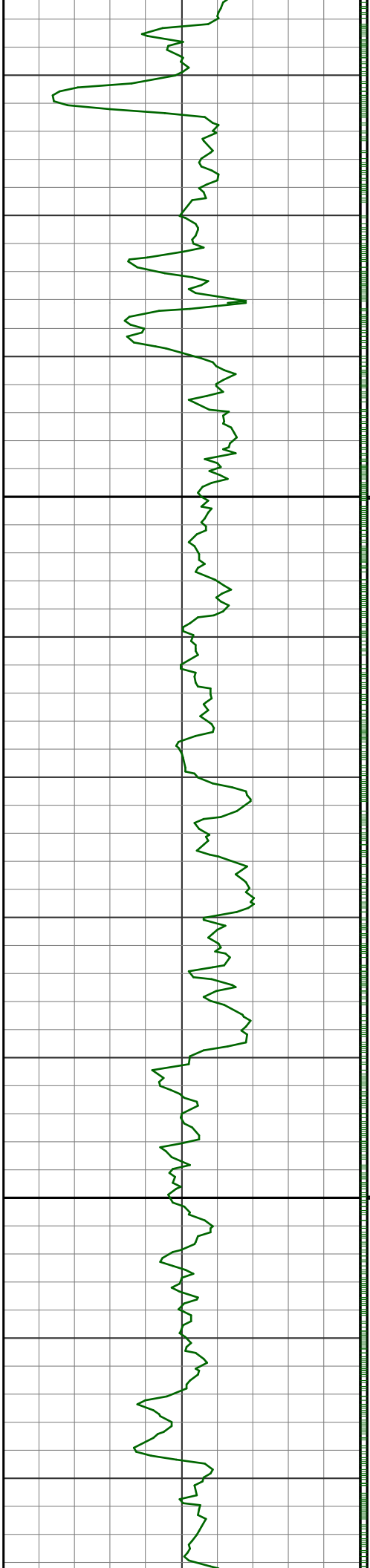
NOTICE - All interpretations are opinions based on inferences from electrical or other measurements and we do not guarantee the accuracy or correctness of any interpretations. We shall not, except in the case of gross or wilful negligence on our part, be liable or responsible for loss, costs, damages or expenses incurred or sustained by anyone as a result of any interpretations made by one of our officers, agents or employees. These interpretations are also subject to our General Terms and Conditions as set out in our current Price Schedule.

PATHFINDER - A Schlumberger Company

Version No : RX5 V6.05 Release 20Sep2013

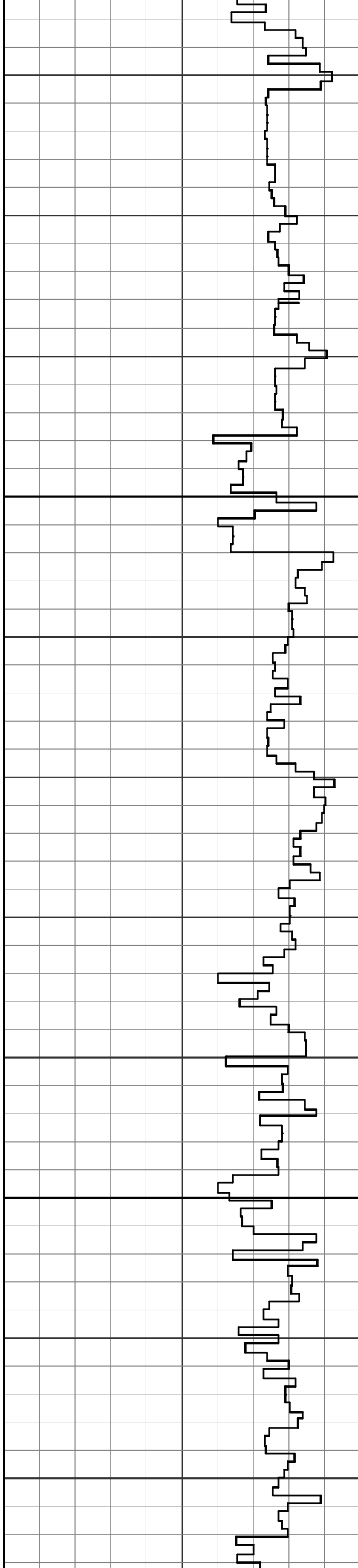
Plot Time : 08-Mar-2014 05:52





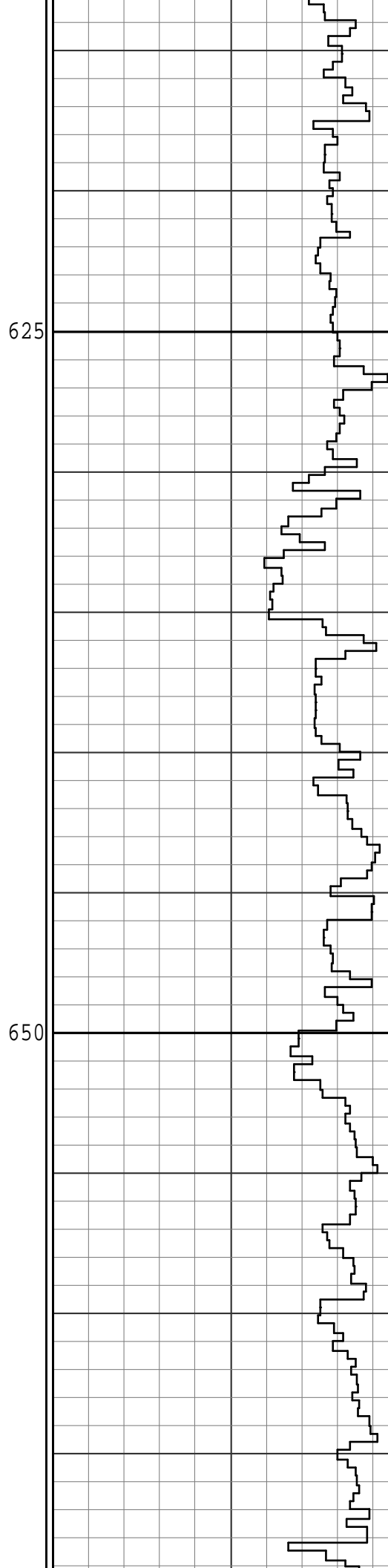
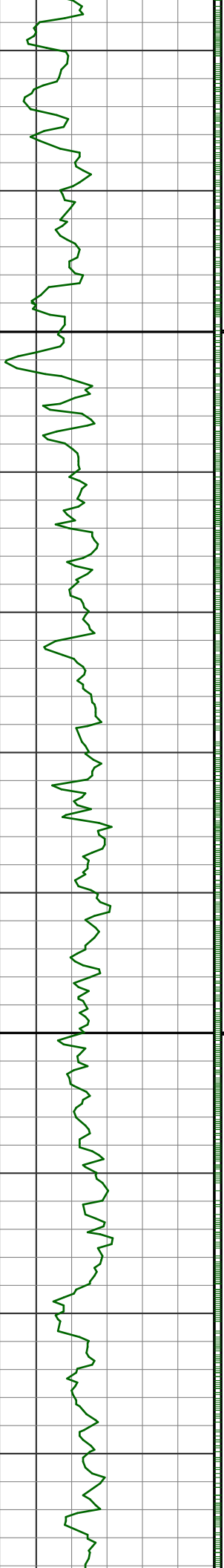
575

600

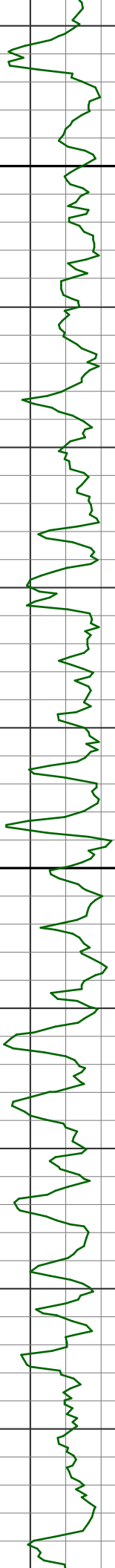


2.8 222.2
1 558.3

3.4 220.5
2 596.7



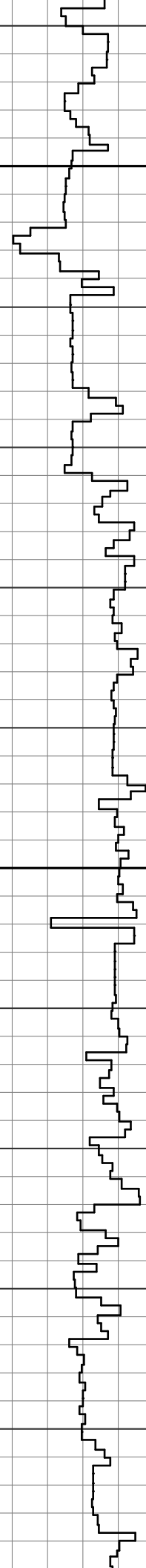
s 3.5 216.5
3 634.4



675

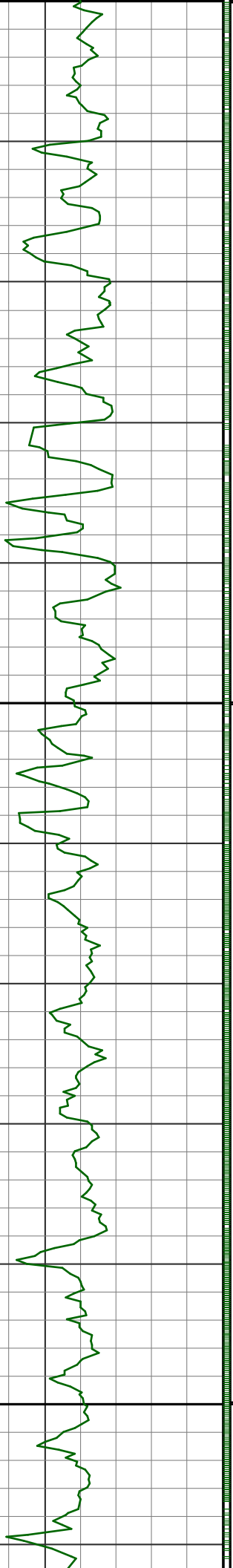
700

725

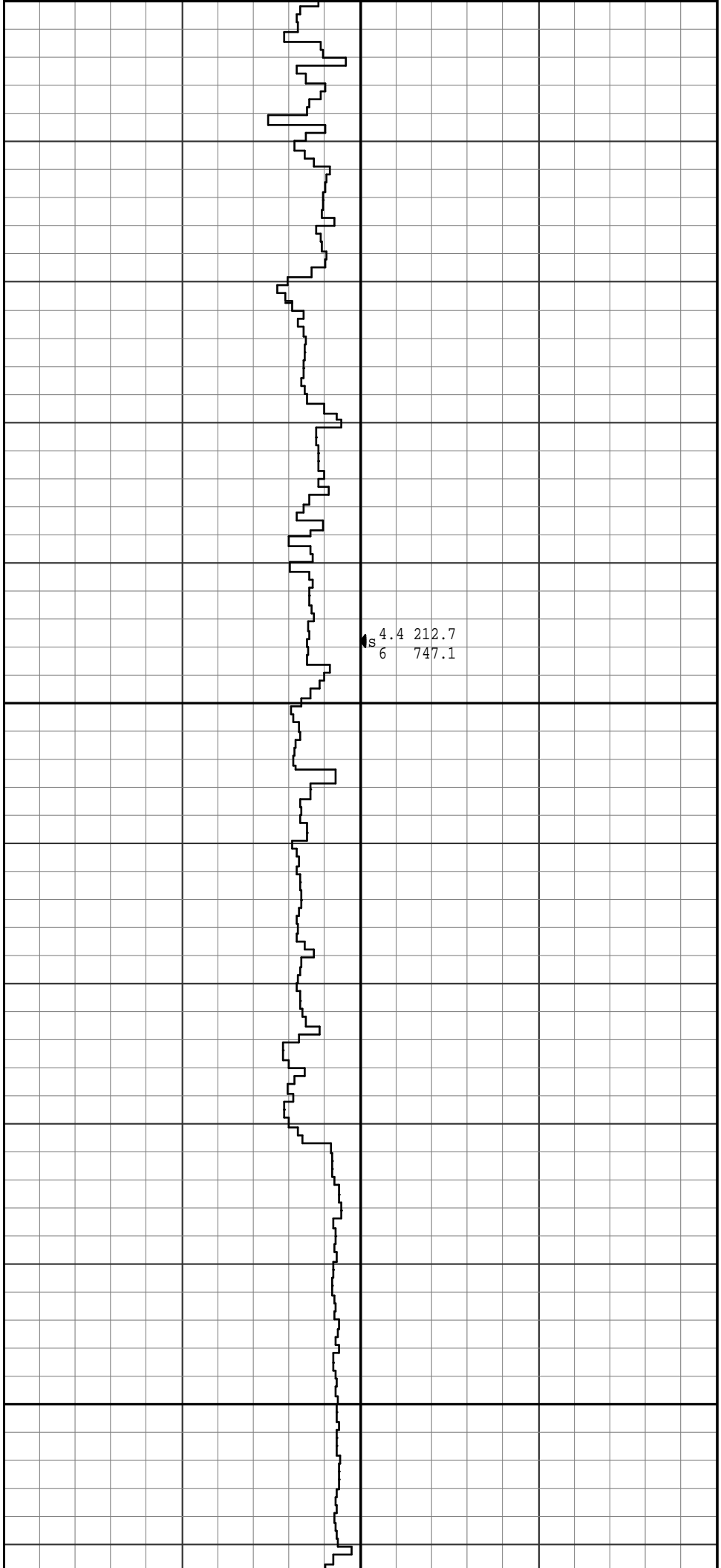


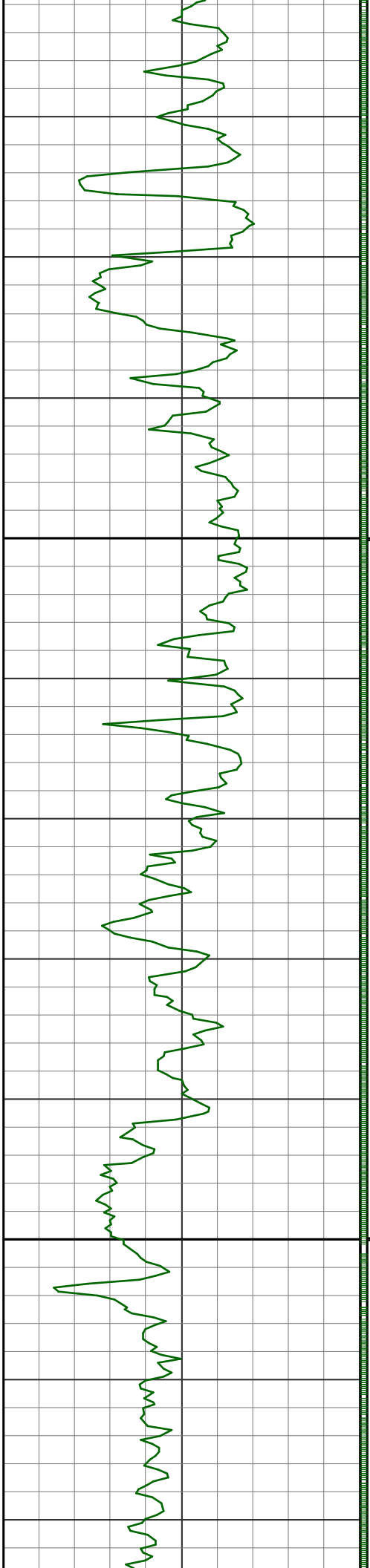
3.8 215.9
S 4 671.9

4.2 214.8
S 5 709.5



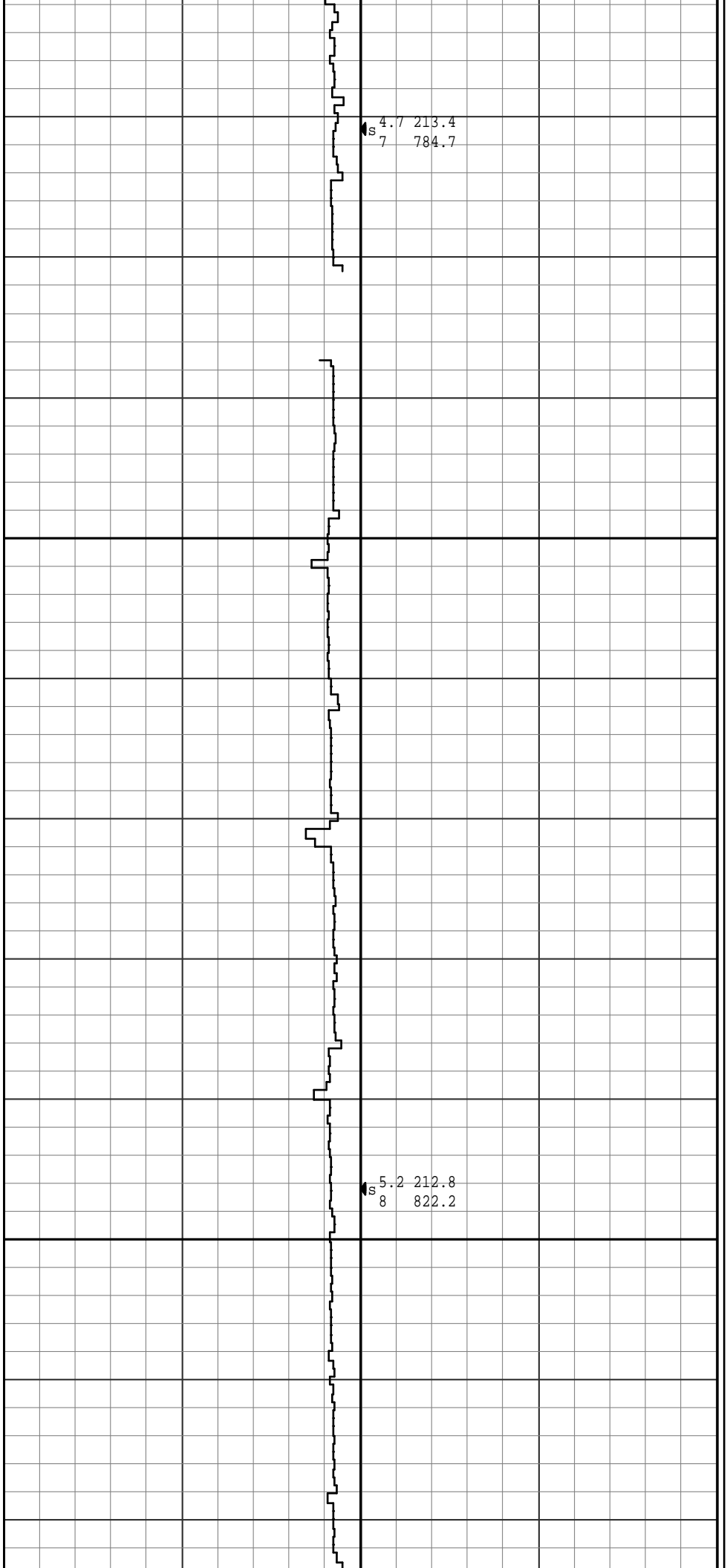
725
750
775

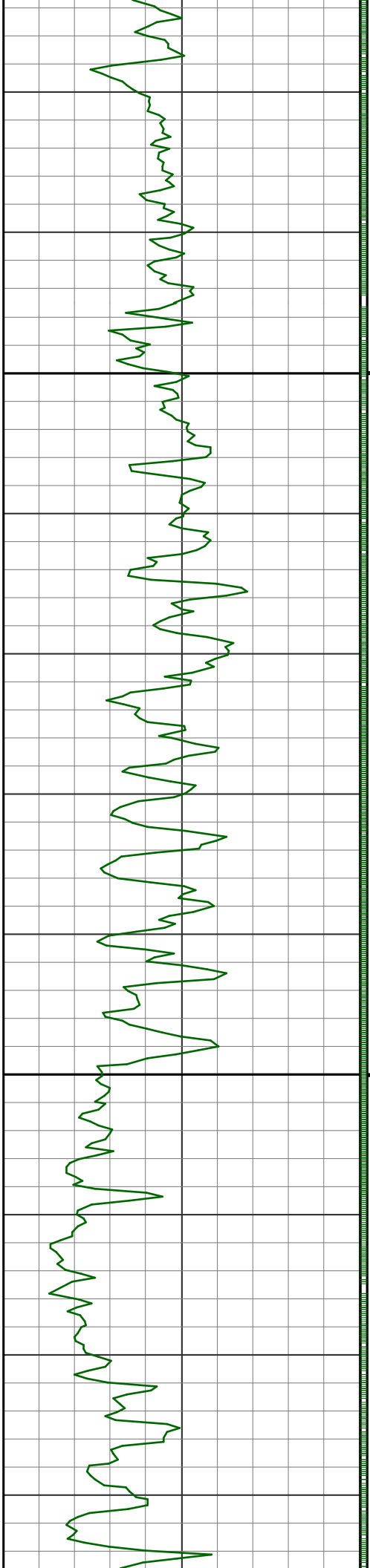




800

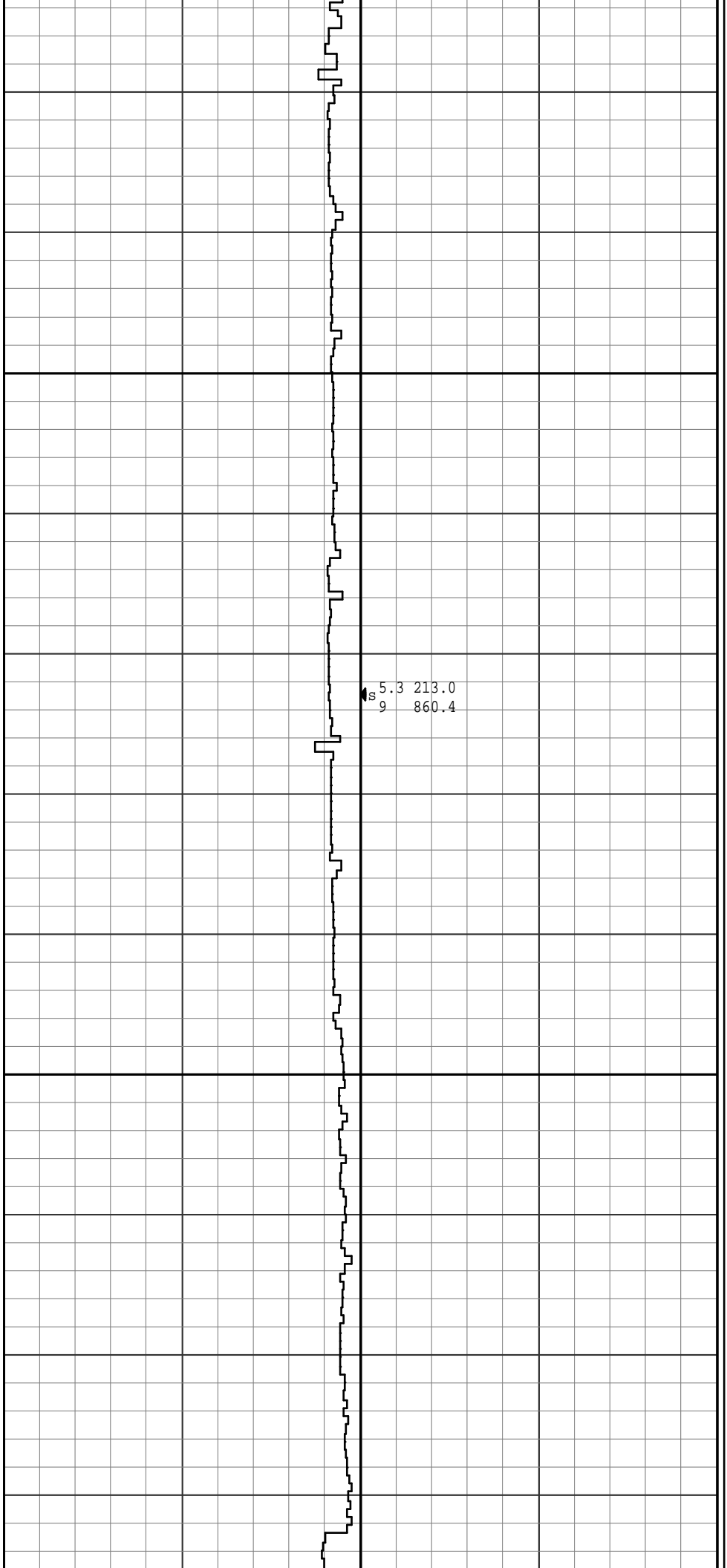
825

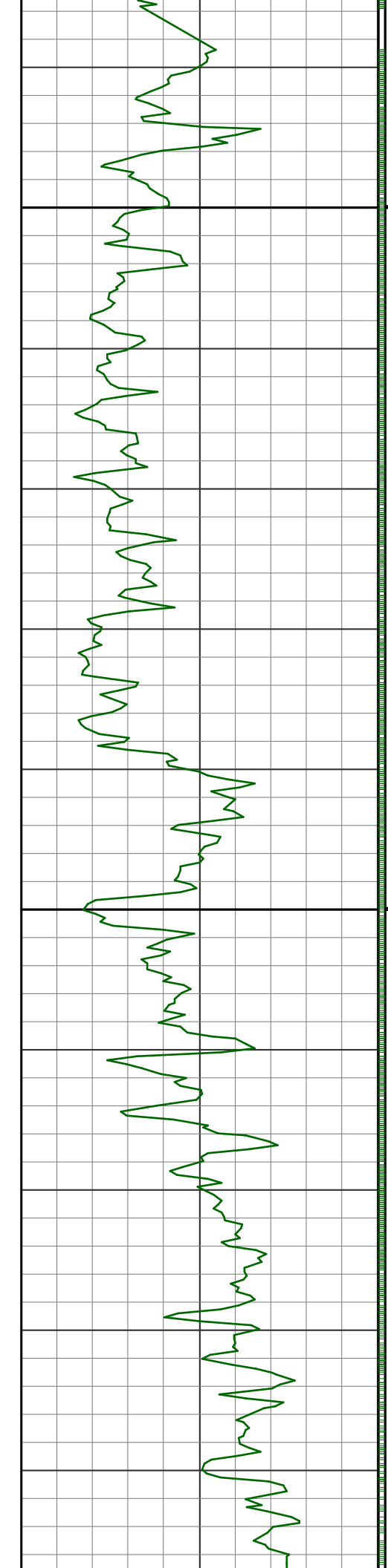




850

875



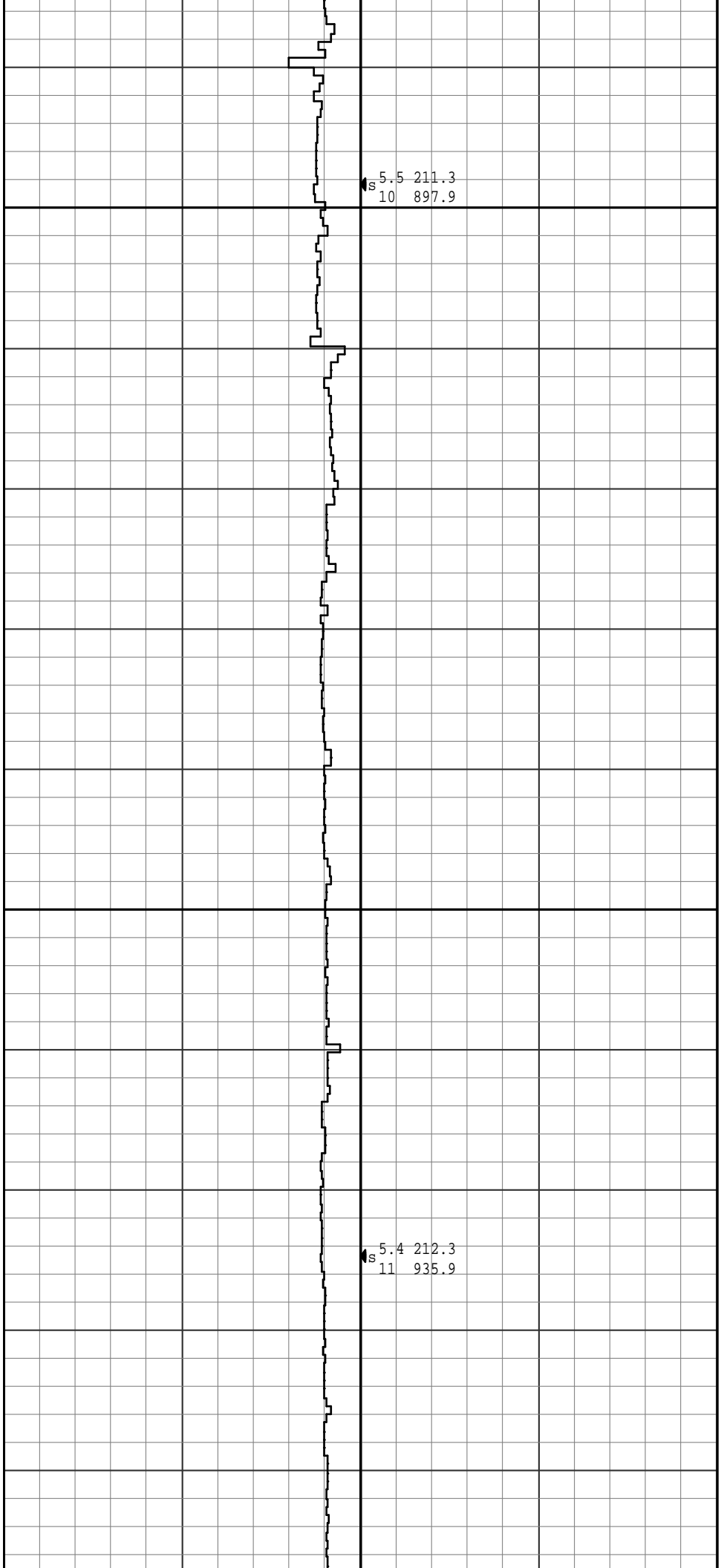


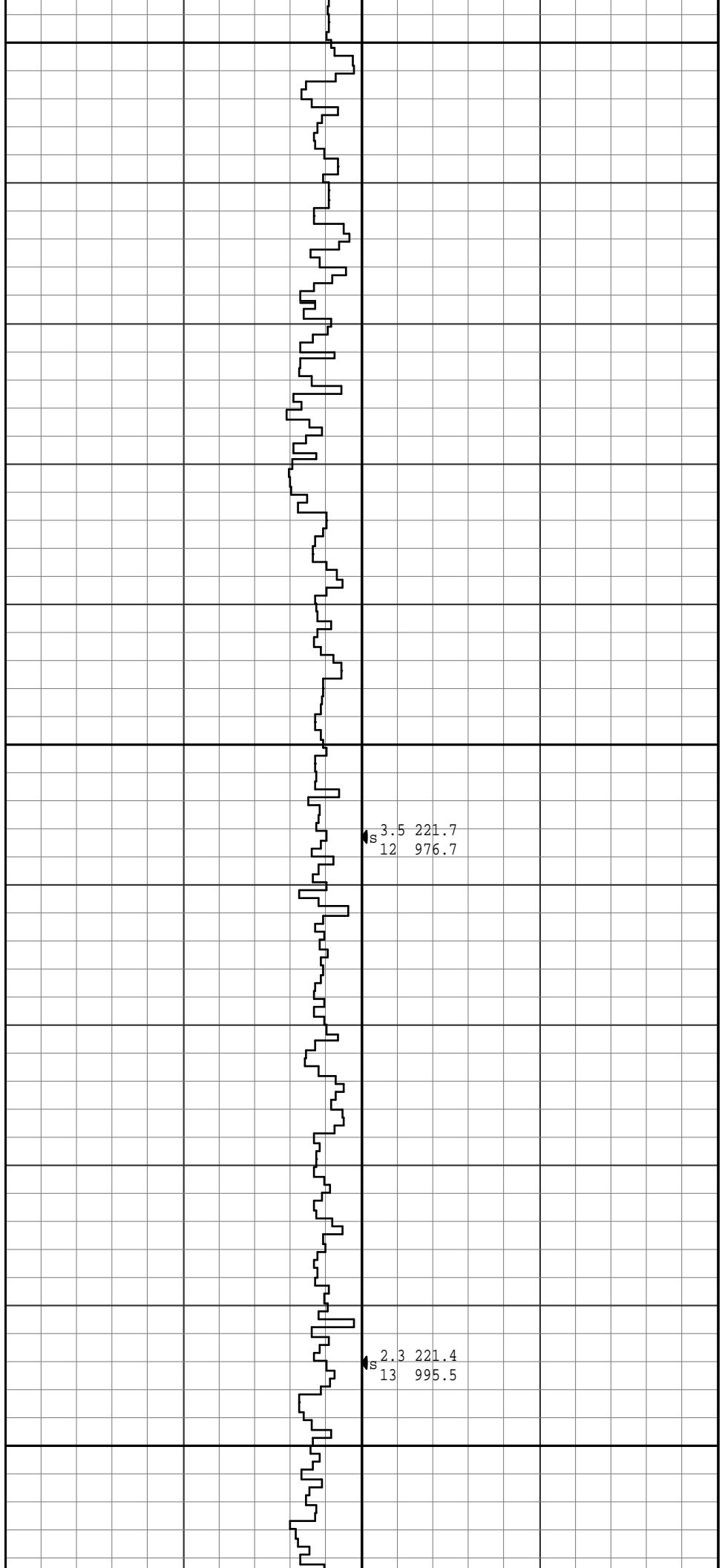
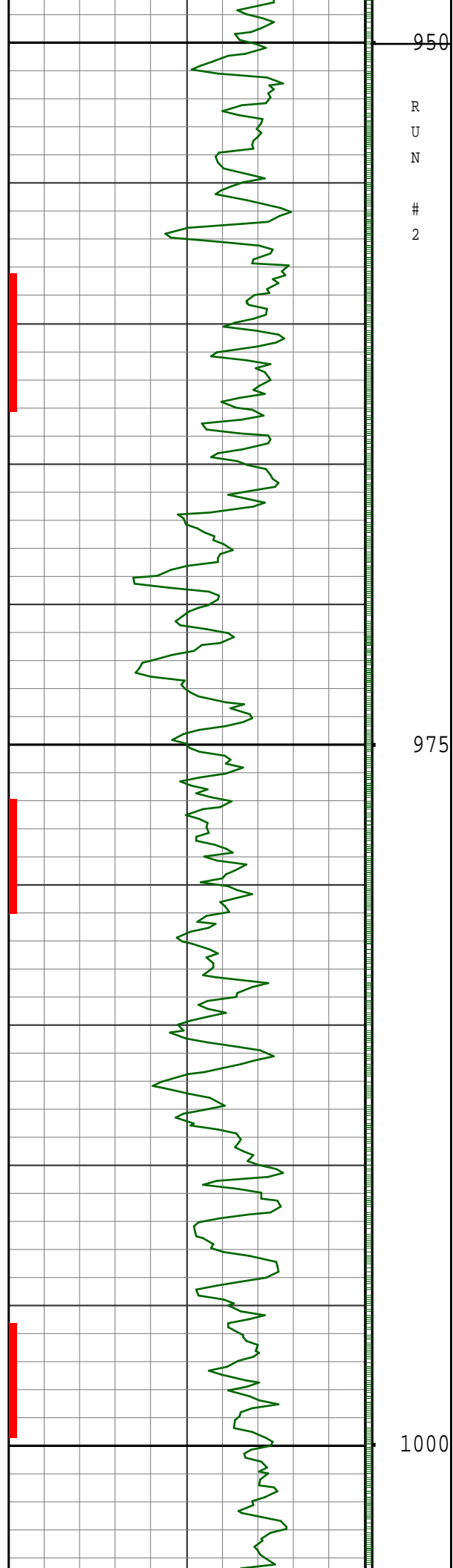
900

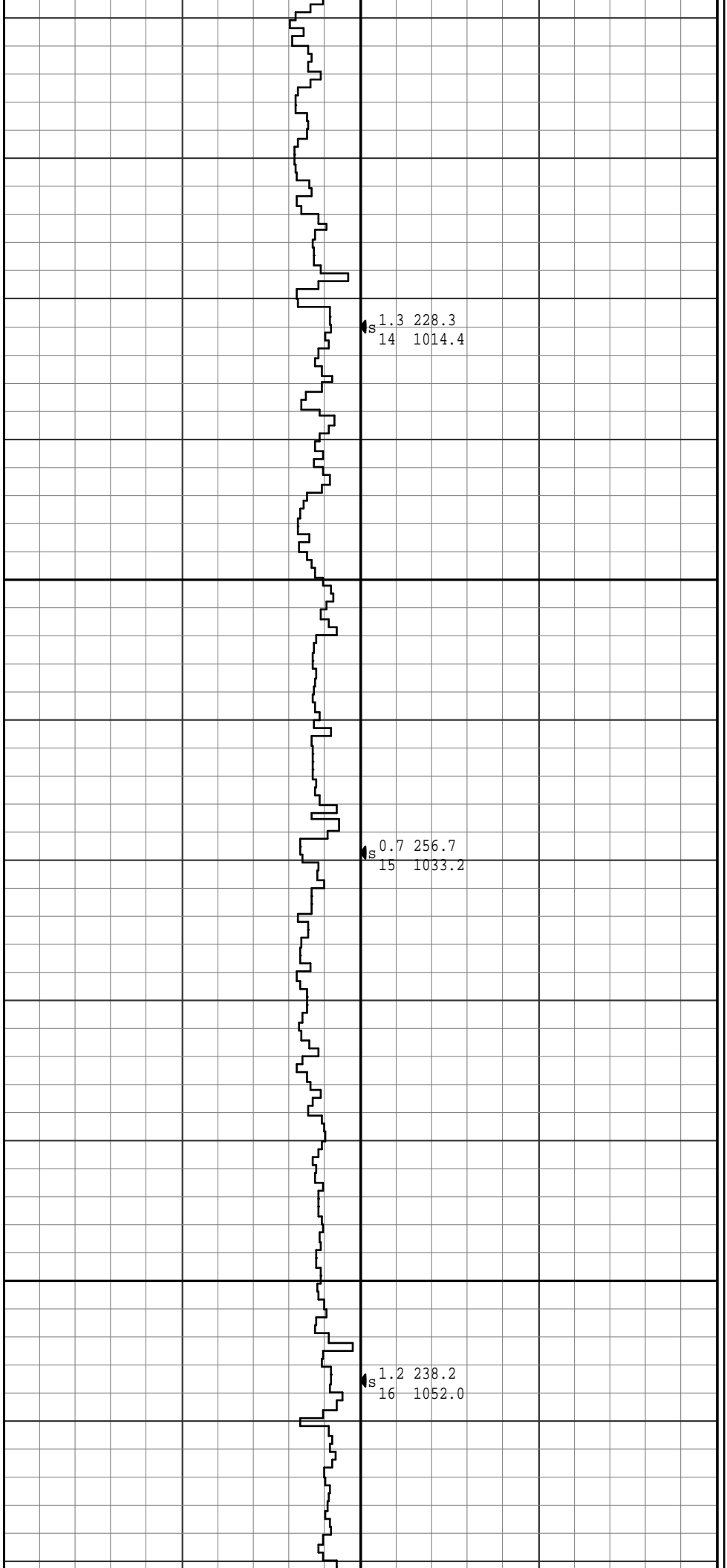
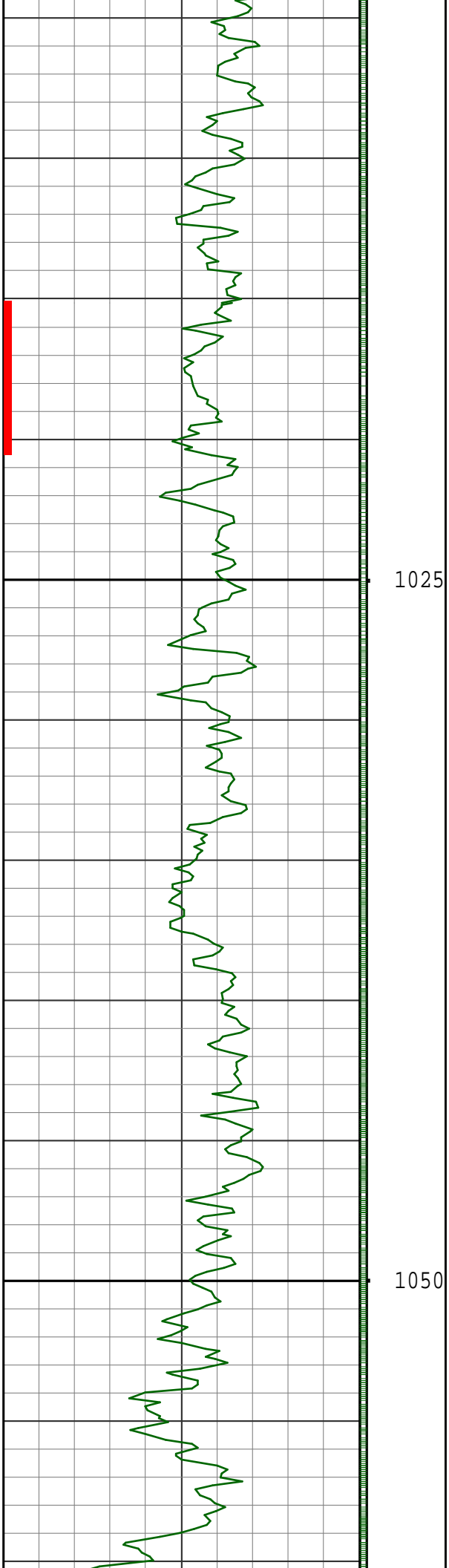
925

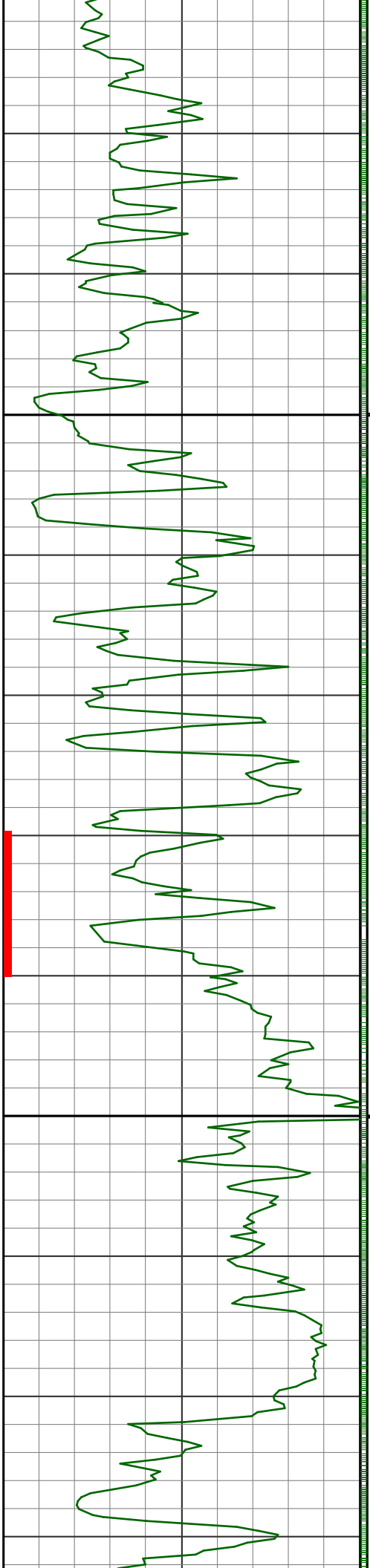
R
U
N

1



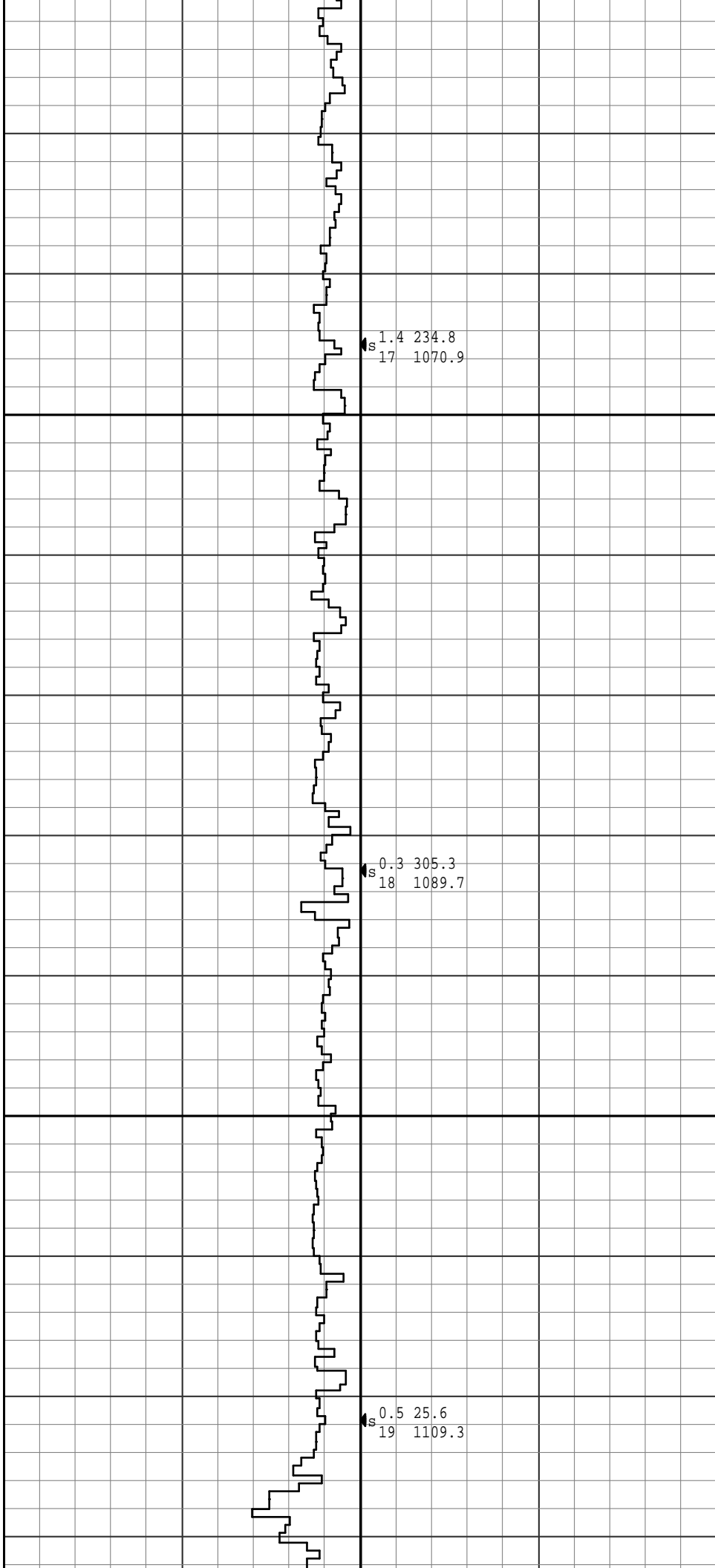


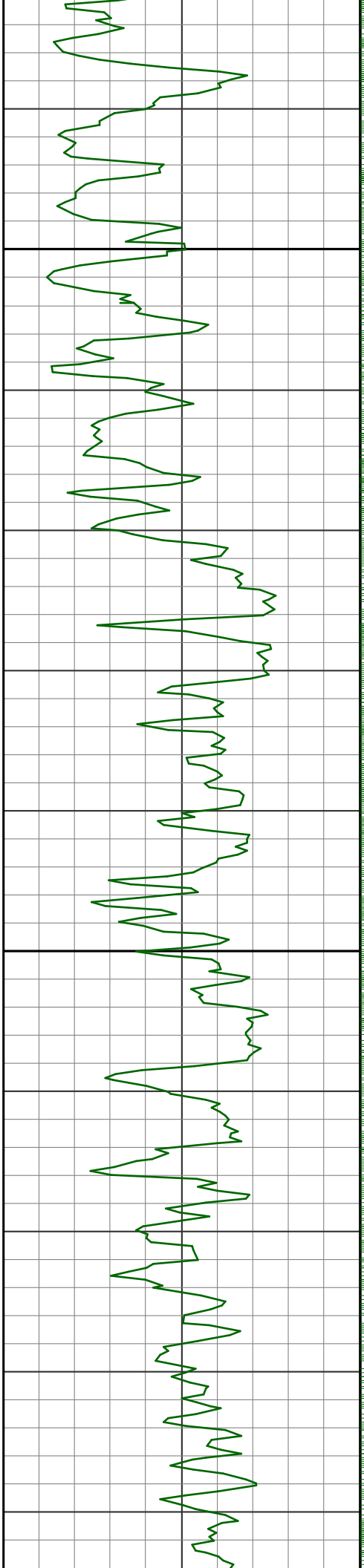




1075

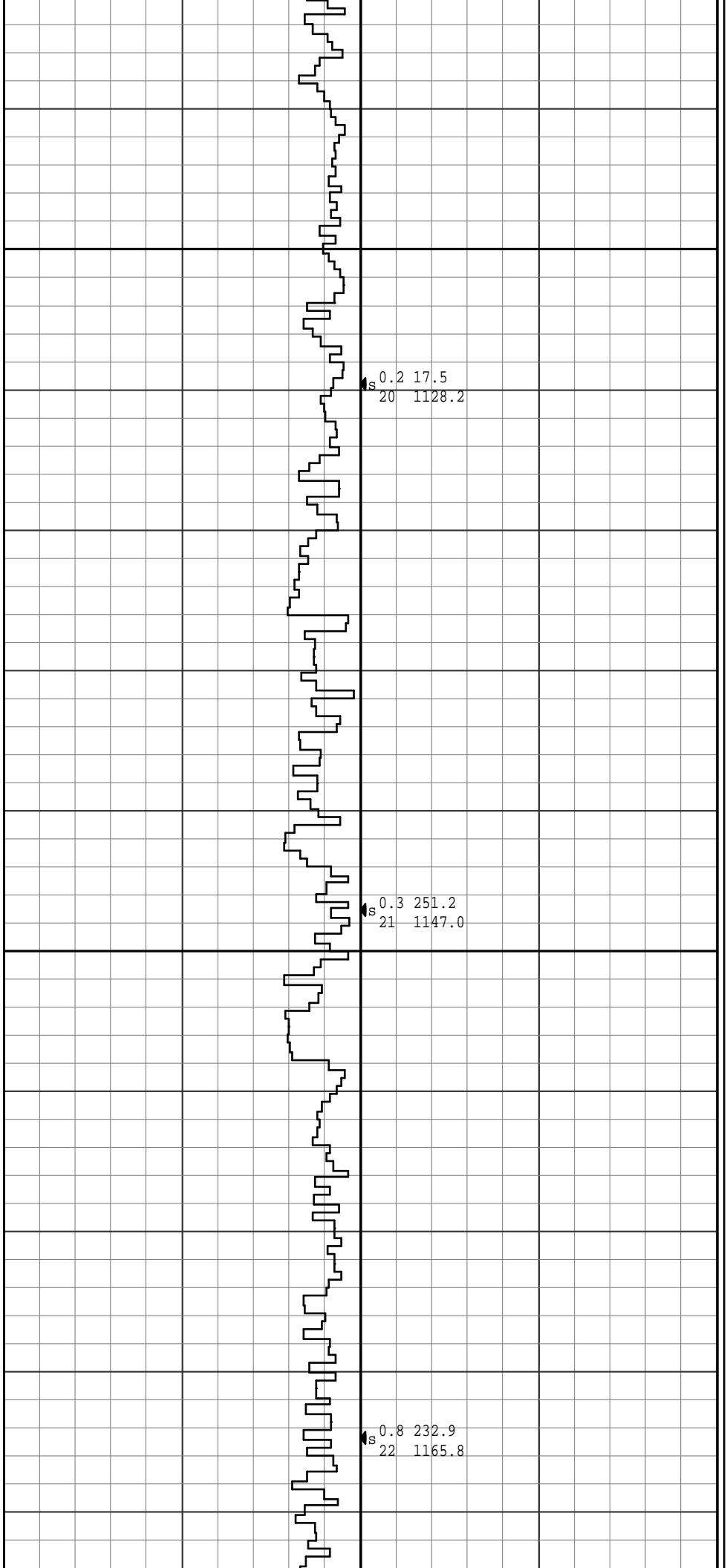
1100

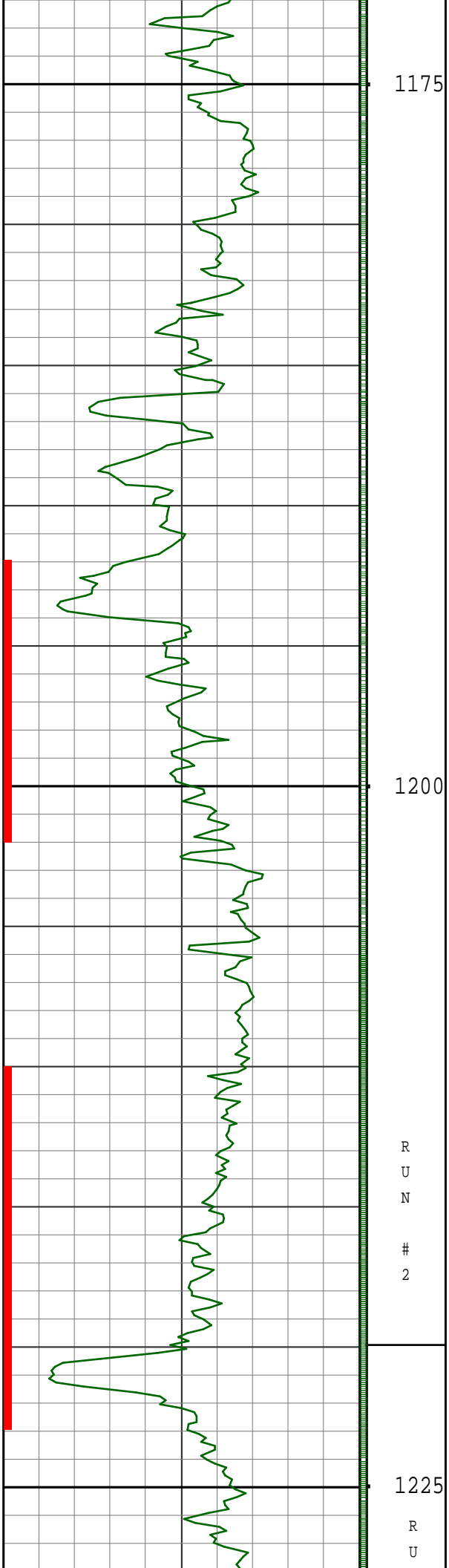




1125

1150





1175

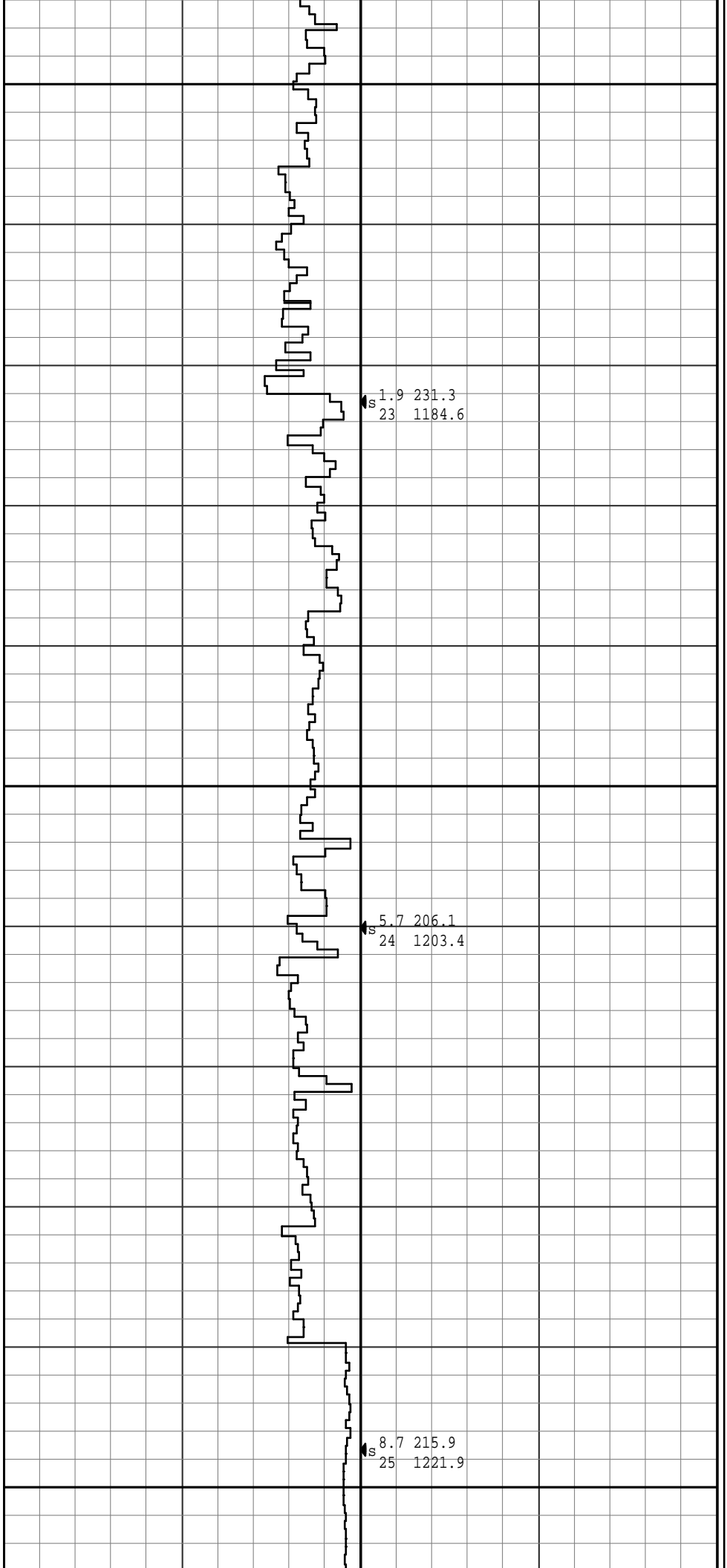
1200

1225

R
U
N

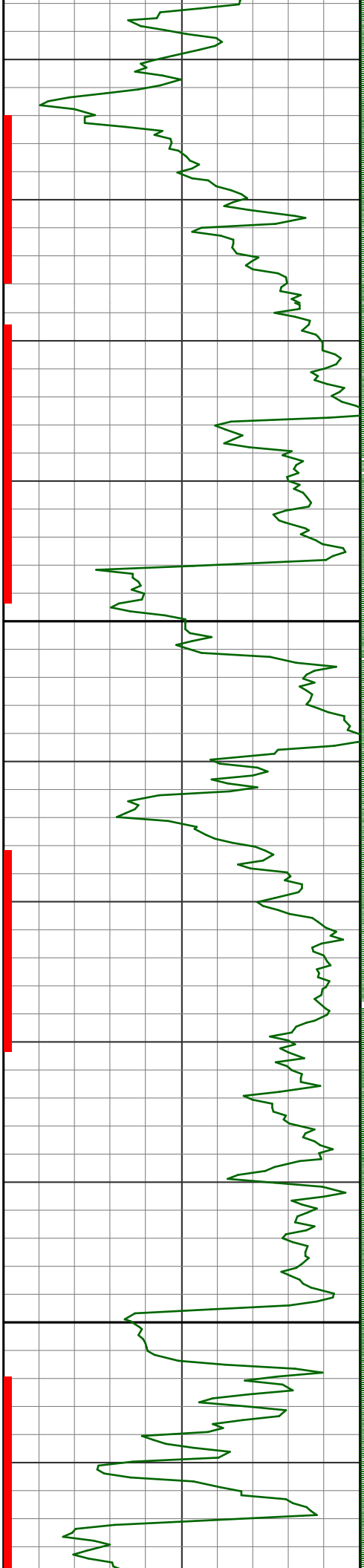
2

R
U



N

3



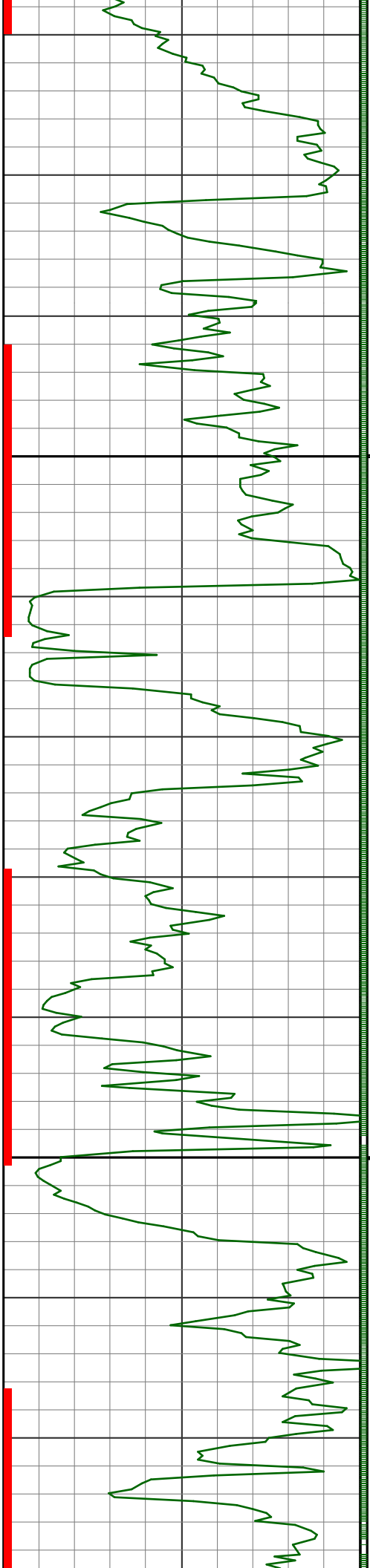
1250

1275

12.3 209.6
26 1240.4

15.2 210.8
27 1258.7

17.0 211.5
28 1276.9



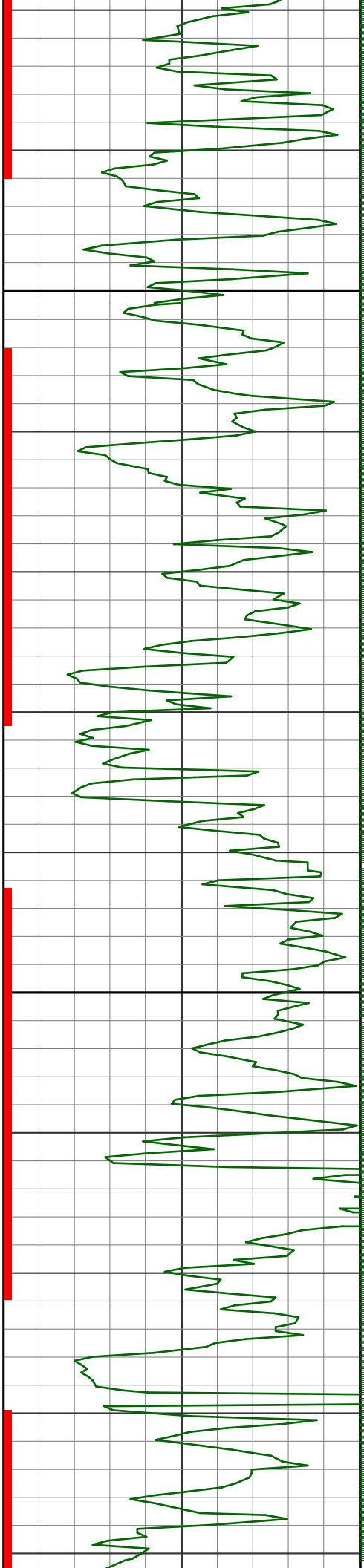
1300

1325

18.6 216.7
29 1294.8

20.5 223.4
30 1312.5

22.8 227.7
31 1329.9



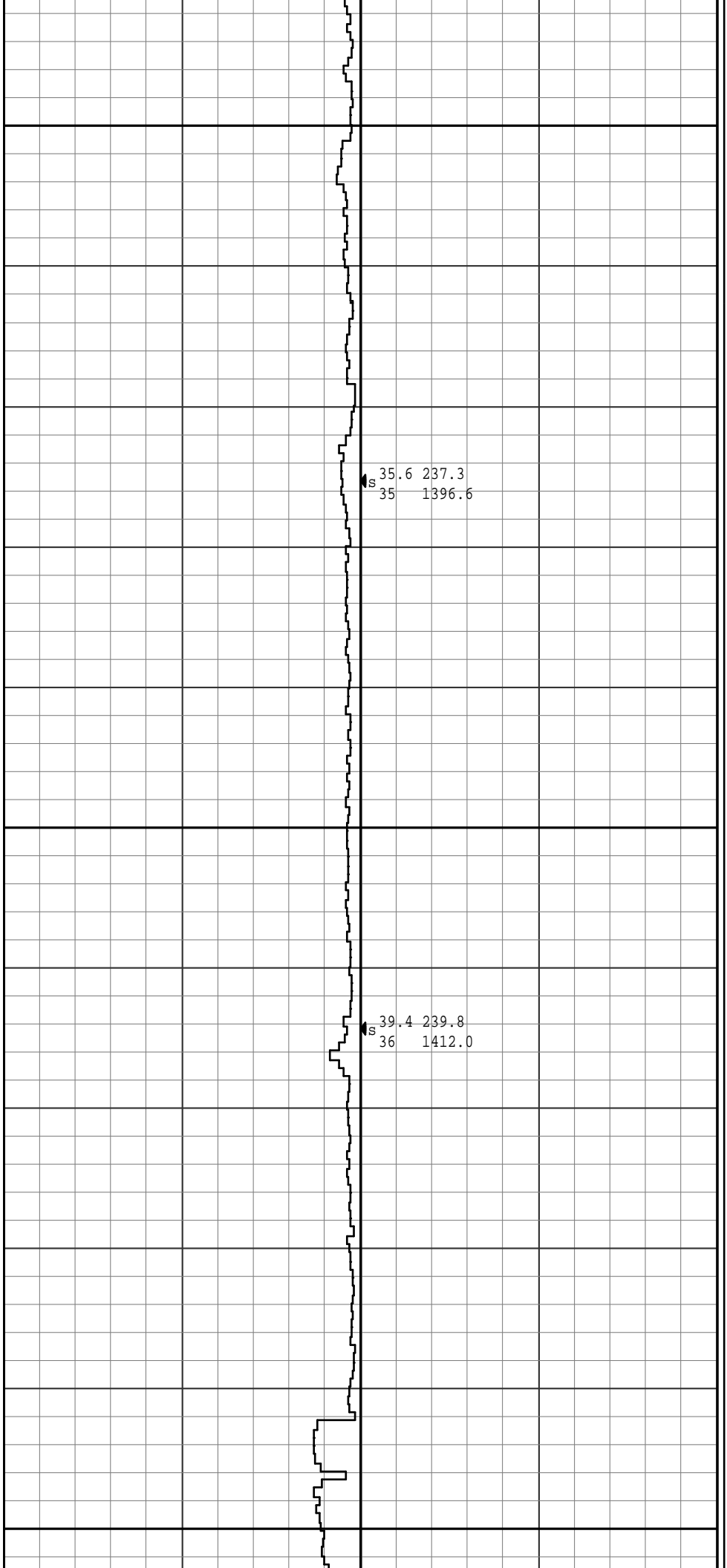
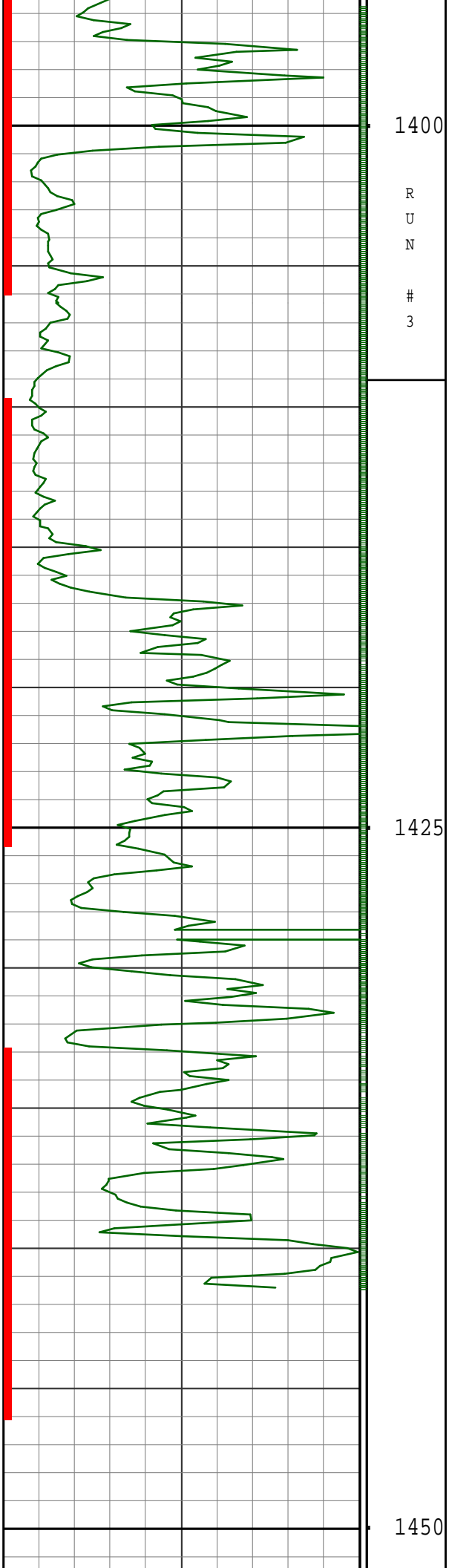
1350

1375

25.6 230.6
32 1347.2

28.3 233.7
33 1363.9

30.9 237.3
34 1380.0



0					200				
GRC_X AAPI					DEPTH				
avg = 15 cm					MD m				
SLIDE (BIT)					1m = 200m				
SHOES									
150					0				
Time Based ROP m/hr					COMMENTS				
avg = 30 cm					inc azi				
					# TVD				